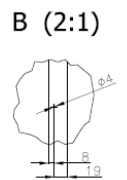
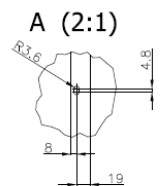
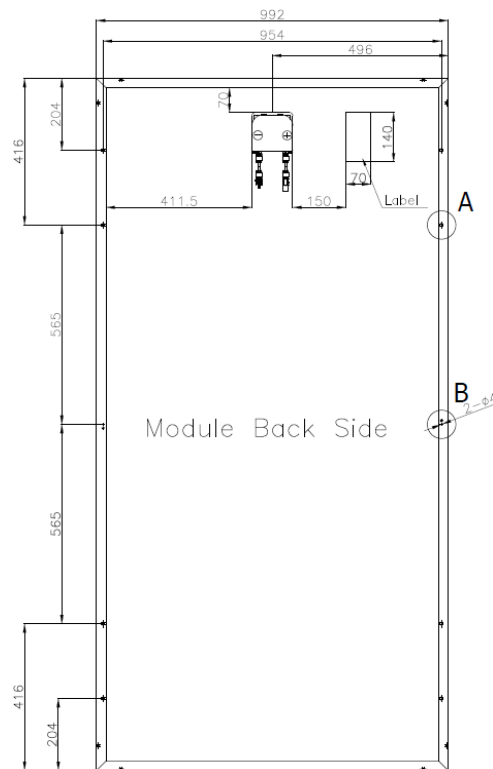




MM72-6RT Series

6" Mono-crystalline Solar Cell, 6 x 12 Cells.



Unit: in [mm]

Product Characteristics

Physical Specifications

Dimension [L x W x H]	77.24 x 39.06 x 1.57in (1962 x 992 x 40mm)
Module Area	20.99 sq. ft (1.95 m ²)
Weight	48.5 lb (22.0 Kg)

*The actual measurements shall depends on the manufacturer's standard.

Electrical Characteristics: Performance at STC*1

Model Type	MM72-6RT-300	MM72-6RT-305	MM72-6RT-310	MM72-6RT-315
Peak Power Rating, Pmax	300W	305W	310W	315W
Power Tolerance	-0 / +5W	-0 / +5W	-0 / +5W	-0 / +5W
Peak Power Voltage, Vpm	35.47	35.61	36.06	36.15
Peak Power Current, Ipm	8.5	8.61	8.72	8.74
Open Circuit Voltage, Voc	44.62	44.76	45.33	45.45
Short Circuit Current, Isc	8.91	8.97	9.08	9.11
Module Efficiency	15.41%	15.67%	15.93%	16.18%

Model Type	MM72-6RT-320	MM72-6RT-325	MM72-6RT-330	MM72-6RT-335
Peak Power Rating, Pmax	320W	325W	330W	335W
Power Tolerance	-0 / +5W	-0 / +5W	-0 / +5W	-0 / +5W
Peak Power Voltage, Vpm	36.6	36.69	37.01	37.28
Peak Power Current, Ipm	8.85	8.87	8.97	9.04
Open Circuit Voltage, Voc	46.01	46.13	46.52	46.86
Short Circuit Current, Isc	9.22	9.24	9.33	9.4
Module Efficiency	16.44%	16.70%	16.96%	17.21%

*STC: Standard Test Condition, 1000W/m², AM 1.5, 25°C

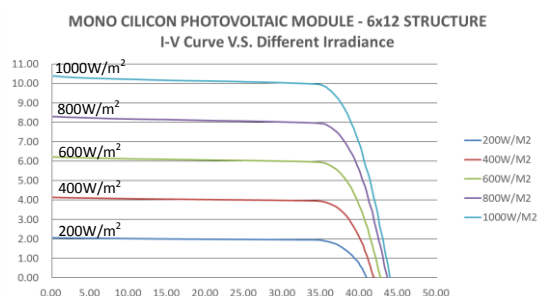
System Integration Parameter & Safety Rating

Maximum System Voltage (U.S. & Canada)	600VDC
Maximum System Voltage (Area Not in the U.S. & Canada)	1000VDC (According to Norms in Each Area)
Series Fuse Rating	15A
Fire Safety Class	Class C
Application Class	Class A (Safety Class II)
Environmental Operating Temperature (°F, °C)	-40 to 185°F, -40 to 85°C

Packing Specifications

Modules Per Carton	12pcs/Carton
Modules Per Pallet	24pcs/Pallet (=2 Cartons/Pallet)
Pallet Dimension [L x W x H]	79.6 x 44.6 x 44.2 in, or 2022 x 1132 x 1122 mm
Pallet Weight	1468 Lbs (642Kg)
20ft Container Capacity (pcs)	240
40ft Container Capacity (pcs)	576

*The accurate weight should depends on the product which customer received.



Limited Warranty***

Product	10Years
90% Output Power	10Years
80% Output Power	25Years

***For details, please read our warranty letter.

Thermal Characteristics

NOCT (Nominal Operating Cell Temperature) °F, °C	115.16°F, 46.20°C
Temperature Coefficient TK Isc (Short Circuit Current) α	+0.055%/°C
Temperature Coefficient TK Voc (Open Circuit Voltage) β	-0.344%/°C
Temperature Coefficient TK Pmax (Peak Power) γ	-0.453%/°C

■ About RITEK Solar

RITEK is a 25-year public traded company, we are a global professional manufacturer to provide solar modules and solar system construction. Through best-quality, and high-performance solar modules and a variety of solar solutions, RITEK Solar can meet and satisfy your perfect standard and need.

■ High Performance

- ⊙ Own key technologies and capabilities to rapidly ramp up.
- ⊙ Module maximum conversion efficiency > 15%.

■ Best Quality and Reliability

- ⊙ We guarantee that all the solar modules are made in Taiwan.
- ⊙ Modules tested follow IEC61215, IEC61730-1 & 2 and UL1703, to ensure the safety and performance.
- ⊙ Manufacturing facility certified to ISO 9001 Quality Management System standards.

■ Contact Windows ■

⊙ Headquarters, Taiwan: RITEK Corporation

No.17, Kuanfu N. Rd., Hsin Chu Industrial Park 30316, Taiwan

Tel: +886-03-598-7298 **Fax:** +886-03-597-8449

e-mail: ritsolar@ritek.com.tw

⊙ RITEK America, Advanced Media Inc.

1440 Bridgegate Dr., Suite 395 Diamond Bar, CA 91765, USA

Tel: +1-909-861-2269 **Fax:** +1-909-612-4258

e-mail: solarsales@ritekusa.com

⊙ RITEK Europe, Conrexx Technology B.V.

Keurmeesterstraat 18 2984 BA Ridderkerk, The Netherlands

Tel: +31-180-44-1666 **Fax:** +31-180-44-1667

e-mail: richard.kwok@conrexx.com